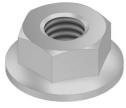


RM

Zelfborgende flensmoer (DIN 6923)



Stand. Uitv.

Elektrolytisch verzinkt

Mat. Opt.

Hot-Dip

Referentie	D	M	S	Dc
RM6	6	6	10	14.2
RM8	8	8	13	17.9
RM10	10	10	15	21.8
RM12	12	12	18	26

HD	Artikel	↕ mm	↔ mm	→ ← mm	↔ mm	kg/stk	📦	Stock	Eenh.
HD	RM6			M6		0,003	100		STK
HD	RM8			M8		0,007	100		STK
HD	RM10			M10		0,013	100		STK
HD	RM12			M12		0,021	100		STK