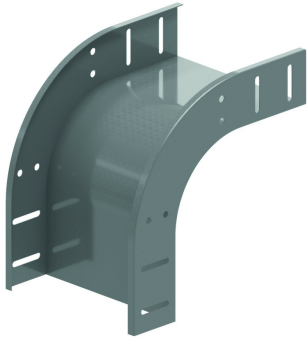


# VB90

## Courbe convexe VE à 90°



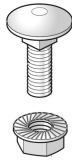
Emboîtable avec le chemin de câbles

Exec. Std.

### A fixer avec:



Boulon et écrou  
autobloquant  
VM



Écrou  
autobloquant et  
boulon à collet  
VMK

| HD | Référence             | ↑<br>mm | ↔<br>mm | →  ←<br>mm | ↔<br>mm | kg/stk | 📦 | Magasin | Unité |
|----|-----------------------|---------|---------|------------|---------|--------|---|---------|-------|
| -  | <b>ZMVB90.110.100</b> | 110     | 100     | 0,75       |         | 0,813  | 1 |         | STK   |
| -  | <b>ZMVB90.110.150</b> | 110     | 150     | 0,75       |         | 0,912  | 1 |         | STK   |
| -  | <b>ZMVB90.110.200</b> | 110     | 200     | 0,75       |         | 1,010  | 1 | X       | STK   |
| -  | <b>ZMVB90.110.300</b> | 110     | 300     | 0,75       |         | 1,208  | 1 | X       | STK   |
| -  | <b>ZMVB90.110.400</b> | 110     | 400     | 0,75       |         | 1,405  | 1 | X       | STK   |
| -  | <b>ZMVB90.110.500</b> | 110     | 500     | 0,75/0,9   |         | 1,885  | 1 |         | STK   |
| -  | <b>ZMVB90.110.600</b> | 110     | 600     | 0,75/0,9   |         | 2,139  | 1 |         | STK   |
| -  | <b>ZMVB90.85.100</b>  | 85      | 100     | 0,75       |         | 0,675  | 1 |         | STK   |
| -  | <b>ZMVB90.85.150</b>  | 85      | 150     | 0,75       |         | 0,774  | 1 |         | STK   |
| -  | <b>ZMVB90.85.200</b>  | 85      | 200     | 0,75       |         | 0,872  | 1 |         | STK   |
| -  | <b>ZMVB90.85.300</b>  | 85      | 300     | 0,75       |         | 1,070  | 1 |         | STK   |
| -  | <b>ZMVB90.85.400</b>  | 85      | 400     | 0,75       |         | 1,267  | 1 |         | STK   |
| -  | <b>ZMVB90.85.500</b>  | 85      | 500     | 0,75/0,9   |         | 1,747  | 1 |         | STK   |
| -  | <b>ZMVB90.85.600</b>  | 85      | 600     | 0,75/0,9   |         | 2,001  | 1 |         | STK   |
| -  | <b>ZMVB90.60.050</b>  | 60      | 50      |            |         | 0,449  | 1 |         | STK   |
| -  | <b>ZMVB90.60.075</b>  | 60      | 75      |            |         | 0,498  | 1 |         | STK   |
| -  | <b>ZMVB90.60.100</b>  | 60      | 100     |            |         | 0,548  | 1 |         | STK   |
| -  | <b>ZMVB90.60.150</b>  | 60      | 150     |            |         | 0,646  | 1 |         | STK   |
| -  | <b>ZMVB90.60.200</b>  | 60      | 200     |            |         | 0,745  | 1 |         | STK   |
| -  | <b>ZMVB90.60.300</b>  | 60      | 300     |            |         | 0,942  | 1 |         | STK   |
| -  | <b>ZMVB90.60.400</b>  | 60      | 400     |            |         | 1,140  | 1 |         | STK   |
| -  | <b>ZMVB90.60.500</b>  | 60      | 501,4   | 0,9        |         | 1,430  | 1 |         | STK   |
| -  | <b>ZMVB90.60.600</b>  | 60      | 601,4   | 0,9        |         | 1,600  | 1 |         | STK   |

Nombre minimal des boulons et des écrous: 8 pièces.