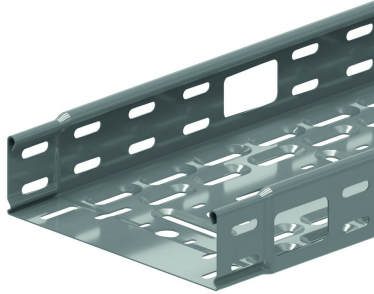


# KBSMCL60

## Cable tray machine constr. interl. ends clickable



Alternative perforation  
Return flanges

Standard finish

Pre-galvanised

| HD | Reference               | mm | mm  | mm | mm   | kg/m  |   | Stock | Unit |
|----|-------------------------|----|-----|----|------|-------|---|-------|------|
| -  | <b>KBSMCL60.100.100</b> | 60 | 100 | 1  | 3000 | 1,560 | 3 | X     | M    |
| -  | <b>KBSMCL60.150.100</b> | 60 | 150 | 1  | 3000 | 1,890 | 3 | X     | M    |
| -  | <b>KBSMCL60.200.100</b> | 60 | 200 | 1  | 3000 | 2,220 | 3 | X     | M    |
| -  | <b>KBSMCL60.300.100</b> | 60 | 300 | 1  | 3000 | 2,870 | 3 | X     | M    |

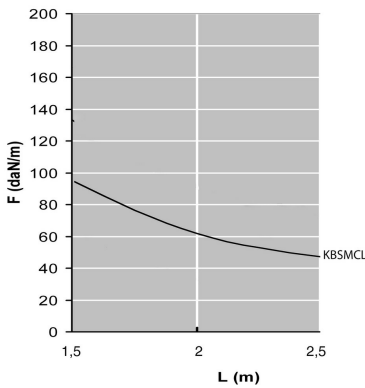
### LOAD DIAGRAM

This diagram illustrates the permissible uniformly distributed loads applied to multiple supports. They comply with IEC 61537 par 10.3.3 test type III with connection to 1/5 of the span.

F = max. admissible load (daN/m)

L = support distance (m)

Max. deflection (m) = L/100



### Fix with:



Fast locking for  
KBSI  
KBV



Toothed round  
head bolt / flange  
nut  
VM

### CHARACTERISTICS

- Clickable
- The cable outlet holes allow the cable trays to be used in machine constructions, especially in the field of internal transport.
- Can be used as lighting rail by immediately connecting through bottom perforations M16 and M20.
- Staggered slots in sides and bottom for easy connection with accessories.
- To be used with standard accessories, such as the cover with swivel clamp.
- Only DCO to be used with cover.

### TECHNICAL INFORMATION

- Large cable outlet with round corners (dimensions 30x50 mm)
- Distance between cable outlets: bottom = 150 mm, sides = 300 mm
- Edge protection RBKBSM to order separately
- Round cable gland central to the bottom, alternately M16/M20