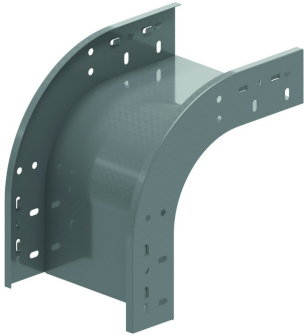


VBCL
Snap-in low elbow 90°



Snap-in system with cable tray KBSC60, KBS60 and KBSI60

Standard finish

Pre-galvanised

Optional finish

HD	Reference	↕ mm	↔ mm	→ ← mm	↔ mm	kg/stk	📦	Stock	Unit
-	VBCL90.60.050	60	50			0,550	1	X	STK
-	VBCL90.60.075	60	75			0,630	1	X	STK
-	VBCL90.60.100	60	100			0,650	1	X	STK
-	VBCL90.60.150	60	150			0,780	1	X	STK
-	VBCL90.60.200	60	200			0,850	1	X	STK
-	VBCL90.60.300	60	300			1,080	1	X	STK
-	VBCL90.60.400	60	400			1,330	1	X	STK
-	VBCL90.60.500	60	500			1,430	1	X	STK
-	VBCL90.60.600	60	600			1,600	1	X	STK
-	ZMVBCL90.60.050	60	50			0,55	1	X	STK
-	ZMVBCL90.60.075	60	75			0,65	1	X	STK
-	ZMVBCL90.60.100	60	100			0,73	1	X	STK
-	ZMVBCL90.60.150	60	150			0,88	1	X	STK
-	ZMVBCL90.60.200	60	200			1	1	X	STK
-	ZMVBCL90.60.300	60	300			1,18	1	X	STK
-	ZMVBCL90.60.400	60	400			1,43	1	X	STK
-	ZMVBCL90.60.500	60	500			1,9	1	X	STK
-	ZMVBCL90.60.600	60	600			2,15	1	X	STK

Opening for extra locking using 4x VM6.10.
Openings provided for fitting a cover.
Only available in height 60 mm.