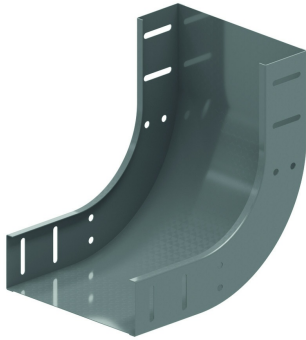


SB90

Rising elbow 90°



Slides over the cable trays

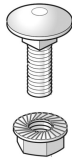
Standard finish

Pre-galvanised

Optional finish

HD	Reference	↕ mm	↔ mm	→ ← mm	↔ mm	kg/stk	📦	Stock	Unit
-	SB90.60.050	60	50			0,550	1	X	STK
-	SB90.60.075	60	75			0,650	1	X	STK
-	SB90.60.100	60	100			0,730	1	X	STK
-	SB90.60.150	60	150			0,880	1	X	STK
-	SB90.60.200	60	200			1,000	1	X	STK
-	SB90.60.300	60	300			1,180	1	X	STK
-	SB90.60.400	60	400			1,430	1	X	STK
-	SB90.60.500	60	500			1,900	1	X	STK
-	SB90.60.600	60	600			2,150	1	X	STK
-	ZMSB90.60.050	60	50			0,55	1		STK
-	ZMSB90.60.075	60	75			0,65	1		STK
-	ZMSB90.60.100	60	100			0,73	1		STK
-	ZMSB90.60.150	60	150			0,88	1		STK
-	ZMSB90.60.200	60	200			1	1		STK
-	ZMSB90.60.300	60	300			1,18	1		STK
-	ZMSB90.60.400	60	400			1,43	1		STK
-	ZMSB90.60.500	60	500			1,9	1		STK
-	ZMSB90.60.600	60	600			2,15	1		STK

Fix with:



Toothed round head bolt / flange nut
VM

Round head square neck bolt / flange nut
VMK

Minimum number bolts and nuts: 8 pieces.