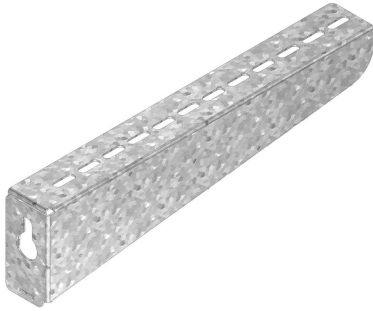


I6WSU

Universal support bracket



For direct fixing on the wall

Standard finish

Stainless Steel 316

Width	Max. load (in daN)
100	120
150	120
200	120
250	120
300	120
400	120
500	120
600	120

HD	Reference	↕ mm	↔ mm	→ ← mm	↔ mm	kg/stk	📦	Stock	Unit
-	I6WSU100	60	128			0,208	24	X	STK
-	I6WSU150	66	178			0,291	24	X	STK
-	I6WSU200	73	228			0,378	24	X	STK
-	I6WSU250	79	278			0,469	12	X	STK
-	I6WSU300	85	328			0,563	12	X	STK
-	I6WSU400	98	428			0,763	12	X	STK
-	I6WSU500	110	528			0,978	6	X	STK
-	I6WSU600	122	628			1,209	6	X	STK

Max. load (in daN): uniformly distributed over complete width of cantilever brackets.

Pickled and passivated.