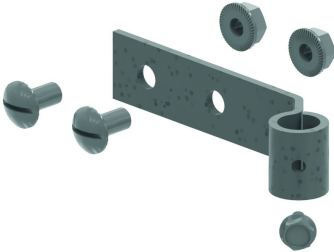


HDBSKLEM

Clamp for fixing of threaded rod



Very fast securing of the threaded rod TIM, using a clamping bold.
Applicable on HDWK.

Standard finish				Hot-dip galvanised						
HD	Reference	<div>↕</div> <div>mm</div>	<div>↔</div> <div>mm</div>	<div>→ ←</div> <div>mm</div>	<div>↔</div> <div>mm</div>	kg/stk	<div>📦</div>	Stock	Unit	
-	HDBSKLEM	25	125			0,120	20	X	STK	

Ends held up through threaded rod TIM.
No additional bolts and nuts needed.
Threaded rod can be mounted in 1 continuous length.
Diameter of the threaded rod TIM not of influence.
Clamping bolt to be tightened with angular momentum of 10 Nm.