

NATO15

Perforated cable tray - upright flanges

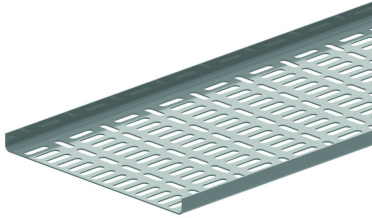
Linear and alternative perforations
Upright flanges

Standard finish

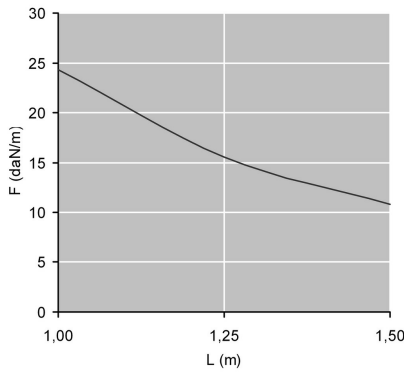
Pre-galvanised

Optional finish

Hot-dip galvanised



HD Reference	↑ mm	↔ mm	→ ← mm	↔ mm	kg/m	📦	Stock	Unit
HD NATO15.050.125	15	50	1,25	2000	0,730	40	X	M
HD NATO15.100.125	15	100	1,25	2000	1,050	20	X	M
HD NATO15.150.125	15	150	1,25	2000	1,350	20	X	M
HD NATO15.200.125	15	200	1,25	2000	1,700	20	X	M
HD NATO15.300.125	15	300	1,25	2000	2,400	20	X	M



LOAD DIAGRAM

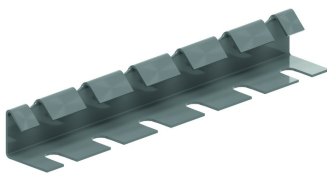
Mounted in continuous span with the joining plates 1/5 away from the supports. Safety factor = 2.

F = max. admissible load (daN/m)

L = support distance (m)

L/200 = deflection (m)

Fix with:



Joiner
V15.200