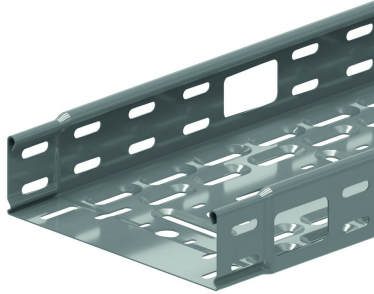


KBSMCL60

Cable tray machine constr. interl. ends clickable



Alternative perforation
Return flanges

Standard finish

Pre-galvanised

HD	Reference	mm	mm	mm	mm	kg/m		Stock	Unit
-	KBSMCL60.100.100	60	100	1	3000	1,560	3	X	M
-	KBSMCL60.150.100	60	150	1	3000	1,890	3	X	M
-	KBSMCL60.200.100	60	200	1	3000	2,220	3	X	M
-	KBSMCL60.300.100	60	300	1	3000	2,870	3	X	M

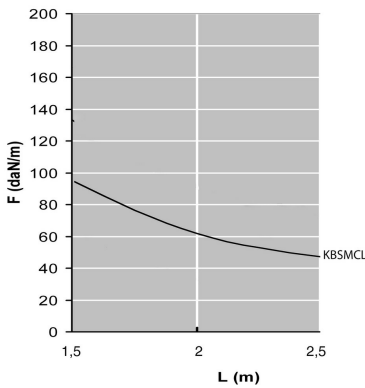
LOAD DIAGRAM

This diagram illustrates the permissible uniformly distributed loads applied to multiple supports. They comply with IEC 61537 par 10.3.3 test type III with connection to 1/5 of the span.

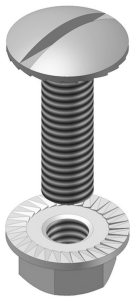
F = max. admissible load (daN/m)

L = support distance (m)

Max. deflection (m) = L/100



Fix with:



Toothed round head bolt / flange nut
VM

CHARACTERISTICS

- Clickable
- The cable outlet holes allow the cable trays to be used in machine constructions, especially in the field of internal transport.
- Can be used as lighting rail by immediately connecting through bottom perforations M16 and M20.
- Staggered slots in sides and bottom for easy connection with accessories.
- To be used with standard accessories, such as the cover with swivel clamp.
- Only DCO to be used with cover.

TECHNICAL INFORMATION

- Large cable outlet with round corners (dimensions 30x50 mm)
- Distance between cable outlets: bottom = 150 mm, sides = 300 mm
- Edge protection RBKBSM to order separately
- Round cable gland central to the bottom, alternately M16/M20