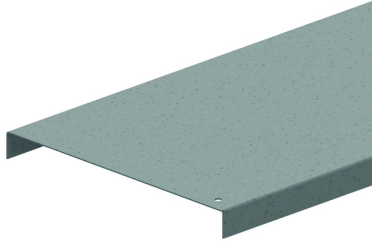


HDDI
Industrial cover



| Standard finish | | Hot-dip galvanised | | | | | | | |
|-----------------|----------------|--------------------|---------|------------|---------|-------|---|-------|------|
| HD | Reference | ↕ mm | ↔ mm | → ← mm | ↔ mm | kg/m | 📦 | Stock | Unit |
| - | HDDI200 | 20 | 205 | | 2000 | 1,850 | 2 | | M |
| - | HDDI300 | 20 | 305 | | 2000 | 3,250 | 2 | | M |
| - | HDDI400 | 20 | 405 | | 2000 | 4,250 | 2 | | M |
| - | HDDI500 | 20 | 505 | | 2000 | 5,250 | 2 | | M |
| - | HDDI600 | 20 | 605 | | 2000 | 6,400 | 2 | | M |

Covers with width > 400 mm are delivered with diagonal reinforcements.

Fix with:



Cover clamp for HDKS
DAVIDKV