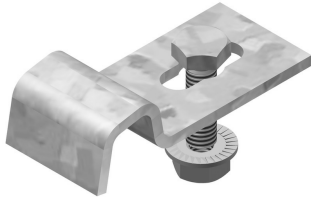


**I6KLLBK**  
**Bracket clamp for I6KLL**



For fixing the cable ladder on the wall bracket.  
 Number: 2 per bracket

Standard finish		Stainless Steel 316							
HD	Reference	↕ mm	↔ mm	→  ← mm	↔ mm	kg/stk	📦	Stock	Unit
-	<b>I6KLLBK25</b>	13	25			0,040	20		STK
-	<b>I6KLLBK40</b>	13	40			0,098	20	X	STK

I6KLLBK25 included: Bolt I6B6.20 and nuts I6RM6.  
 I6KLLBK40 included: Bolt I6B8.20 and sliding nuts PNP08SS.

I6KLLBK25 for cantilevers  
 I6KLLBK40 for 41 profiles

Pickled and passivated.