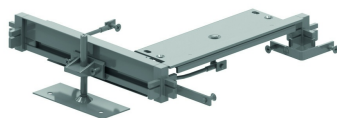


# OVGB

## Bogenstück Unterflurkanal estrichbündig

Verbindungswinkel (OVGHV) + Endstück (OVGE) + Traverse (OVGTR) + 2 Erdungsklemmen (OVGEQ - OVGEQH).



HD	Referenz	↕ mm	↔ mm	→  ← mm	↔ mm	kg/stk	📦	Lager	Einheit
-	<b>OVGB250.3</b>		250			1,011	10	X	STK
-	<b>OVGB350.3</b>		350			1,307	10	X	STK
-	<b>OVGB450.4</b>		450			1,661	10	X	STK