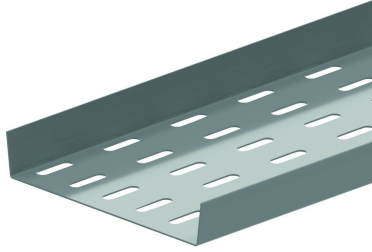


BP
Bodenplatte



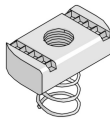
Standardausführung

Sendzimir verzinkt

Ausführung Option

| HD | Referenz | ↕ mm | ↔ mm | → ← mm | ↔ mm | kg/m | 📦 | Lager | Einheit |
|----|----------------|---------|---------|------------|---------|-------|---|-------|---------|
| - | BP200 | 25 | 141 | | 3000 | 1,560 | 3 | | M |
| - | BP300 | 25 | 241 | | 3000 | 2,400 | 3 | | M |
| - | BP400 | 25 | 341 | | 3000 | 3,230 | 3 | | M |
| - | BP500 | 25 | 441 | | 3000 | 4,030 | 3 | | M |
| - | BP600 | 25 | 541 | | 3000 | 4,860 | 3 | | M |
| - | ZMBP200 | 25 | 141 | | 3000 | 1,366 | 3 | | M |
| - | ZMBP300 | 25 | 241 | | 3000 | 2,048 | 3 | | M |
| - | ZMBP400 | 25 | 341 | | 3000 | 2,730 | 3 | | M |
| - | ZMBP500 | 25 | 441 | | 3000 | 3,411 | 3 | | M |
| - | ZMBP600 | 25 | 451 | | 3000 | 4,093 | 3 | | M |

Zu befestigen mit:



Flachrundkopfschraube
RB

Gleitmutter
für
Tragprofile
PNS